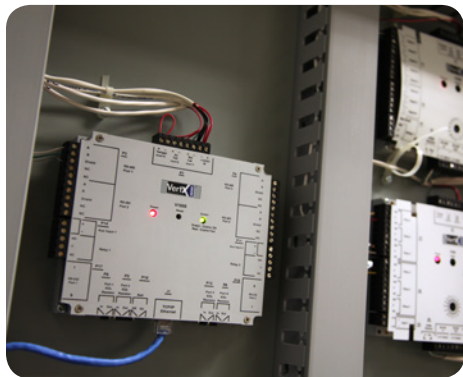


VertX EVO™ V1000 Networked Controller

For Interface to Non-Hi-O Devices



NETWORKED ACCESS CONTROLLER FOR INTERFACE WITH UP TO 32 DOOR CONTROLLERS

- **Open Architecture** - Development platform enables use of hardware with any OPIN compliant access control software from a wide variety of partners.
- **Master Controller** - Minimizes corporate Local Area Network (LAN) overhead by providing access control decisions for up to 64 readers.
- **High Performance** - Powerful platform performance increases door uptime.
- **Versatile Interoperability** - Works with standard VertX® Controllers and is interoperable with VertX V100, 200 and 300 interface modules.

Cable Specifications

Ethernet:

- 300ft (100m), CAT-5
 - ALPHA 9504C, ALPHA 9405F
- #### RS-485 (for Vx00 connection):
- 4000ft (1219m), 2-twisted pair shielded 100Ω cable (two independent RS-485 networks)
 - 22AWG Belden 3105

Input Circuits:

- 500ft (150m), 2-conductor shielded
- 22AWG ALPHA 1292C
- 18AWG ALPHA 2421C

Output Circuits:

- 500ft (150m), 2-conductor shielded
- 22AWG ALPHA 1172C
- 18AWG ALPHA 1897C

HID Global's Networked Access Solutions provide an open architecture development platform that enables HID's software partners to deploy a wide variety of versatile access control systems that protect their customers' hardware investments.

As part of HID Global's Networked Access Solutions, VertX EVO™ V1000 is a multi-door access control panel that reduces the burden on corporate LANs by connecting up to 32 door controllers using only one IP address.

VertX EVO V1000 handles all online door decisions, input monitoring and output control for all connected interface modules. The solution has two on-board inputs and outputs for local input point

monitoring and auxiliary output control, and is powered by a local power supply (12 or 24 VDC). VertX EVO V1000 works with standard VertX V100 door interface, V200 input monitor and V300 output control interface modules.

VertX EVO solutions are created for both on-site system administration as well as service oriented off-site solutions, depending on the OEM software provider's total solution.

Providing access to a complete ecosystem of partner solutions, VertX EVO enables customizable products that leverage the unique power of individual software provider offerings.

Features:

- Provides a complete and fully functional hardware/firmware infrastructure for access control software host systems.
- Enables the replacement of head end software without visiting the access control panel, reducing change out costs.
- Stores a complete access control and configuration database for up to 32 Reader Interfaces (up to 64 doors) and 250,000 cardholders.
- Connects to the host and other devices on a TCP/IP network.
- Transactions event buffer max 99,999
- Receives and processes real-time commands from the host software application.
- Reports all activity to the host; reports supervised inputs /alarms with 255 priorities.
- Provides fully functional offline operation when not actively communicating with the host access control software application, performing all access decisions and event logging.
- Access control system interfaces with a maximum of 32. device combinations. Devices are:
 - V100 - Door/reader interface (up to doors/1 reader or 1 door/2 readers)
 - V200 - Input monitor interface (up to 16 monitor points per device)
 - V300 - Output control interface (up to 12 control relays per device)



SPECIFICATIONS

| | |
|---|--|
| Model (and Part #) | EVO V1000 (71000BEP0N01A) |
| Mounting | Mount to any wall surface, using four screws. For UL compliance, one or more gateways can be mounted inside a locking customer supplied NEMA-4 rated enclosure |
| Dimensions | "5.8" W x 4.825" H x 1.275" D (147.32 mm x 122.55 mm x 32.38 mm)" |
| Weight | 12.4 oz (.35 kg) |
| Housing Material | UL94 polycarbonate |
| Audio / Visual Indicators | Power LED and RS-485 Communications LED |
| Operating Temperature | 32° to 122° F (0° to 50° C) |
| Operating Humidity | 5% to 95% relative, non-condensing |
| Communication Ports | Ethernet (10/100), RS485 (half duplex) |
| Certifications | UL294 (US) Listed Component, CSA 205 (Canada), FCC Class A (US), ICES-003 Class A (Canada), CE Mark EN 301 489-3 EN 55022 EN 50130-4 (EU), C-Tick AS/NZS CISPR 22 (Australia, New Zealand) & Korea (KCC) |
| Warranty | Warrantied against defects in materials and workmanship for 18 months (See complete warranty policy for details). |
| Input Power | |
| Operating Current (MAX) @ 12-24VDC | 1000mA |
| Operating Current (AVG) @ 12VDC | 210mA |
| Supervised Inputs Power (MAX) | 0.025W (5mA sink, 5V nominal) 0 to +5VCD Ref |
| Relay Rating | |
| Relay Contact Rating (Dry Output) | 2A @ 30VDC (MAX Amperage that is UL Certified) 5A @ 30VDC |



hidglobal.com

North America: +1 512 776 9000
Toll Free: 1 800 237 7769
Europe, Middle East, Africa: +44 1440 714 850
Asia Pacific: +852 3160 9800
Latin America: +52 55 5081 1650

© 2015 HID Global Corporation/ASSA ABLOY AB. All rights reserved. HID, the HID logo, EDGE, EDGE EVO, and iCLASS are trademarks or registered trademarks of HID Global in the U.S. and/or other countries. All other trademarks, service marks, and product or service names are trademarks or registered trademarks of their respective owners.

2015-05-08-vertx-evo-v1000-controller-ds-en PLT-00554

An ASSA ABLOY Group brand

ASSA ABLOY