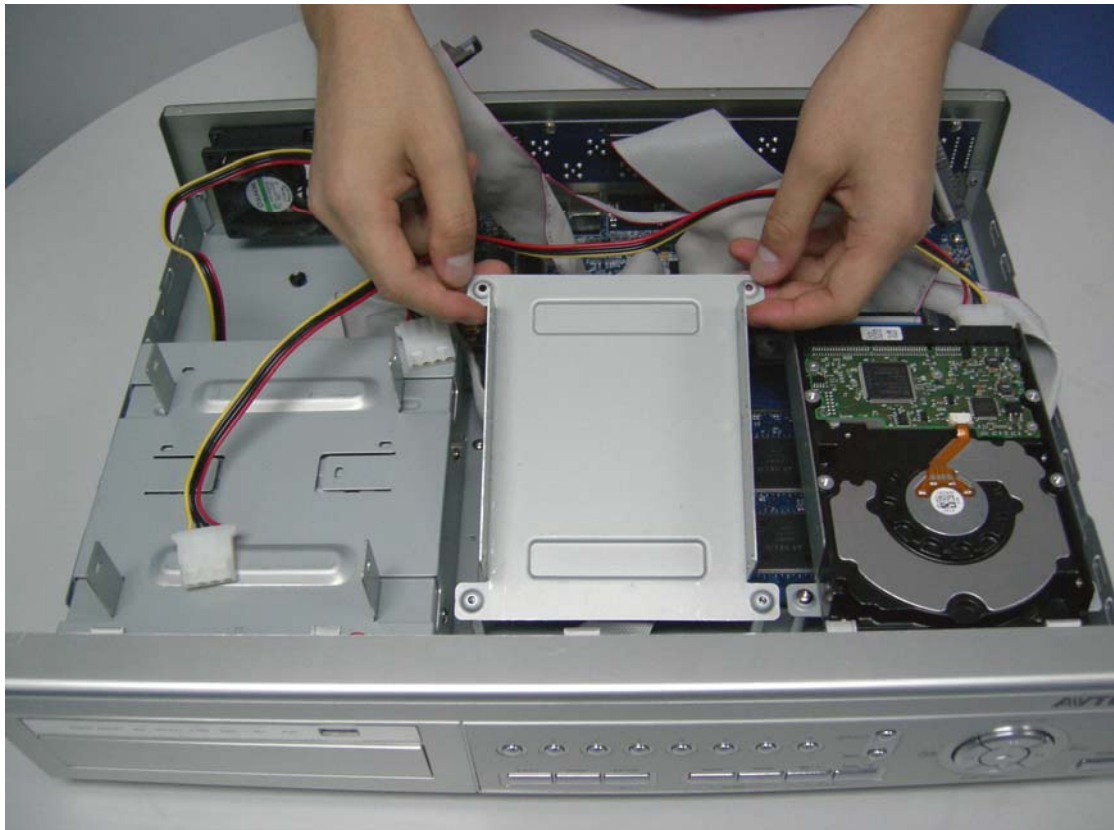


## Hardware Reset Approach for AVD715C/717C

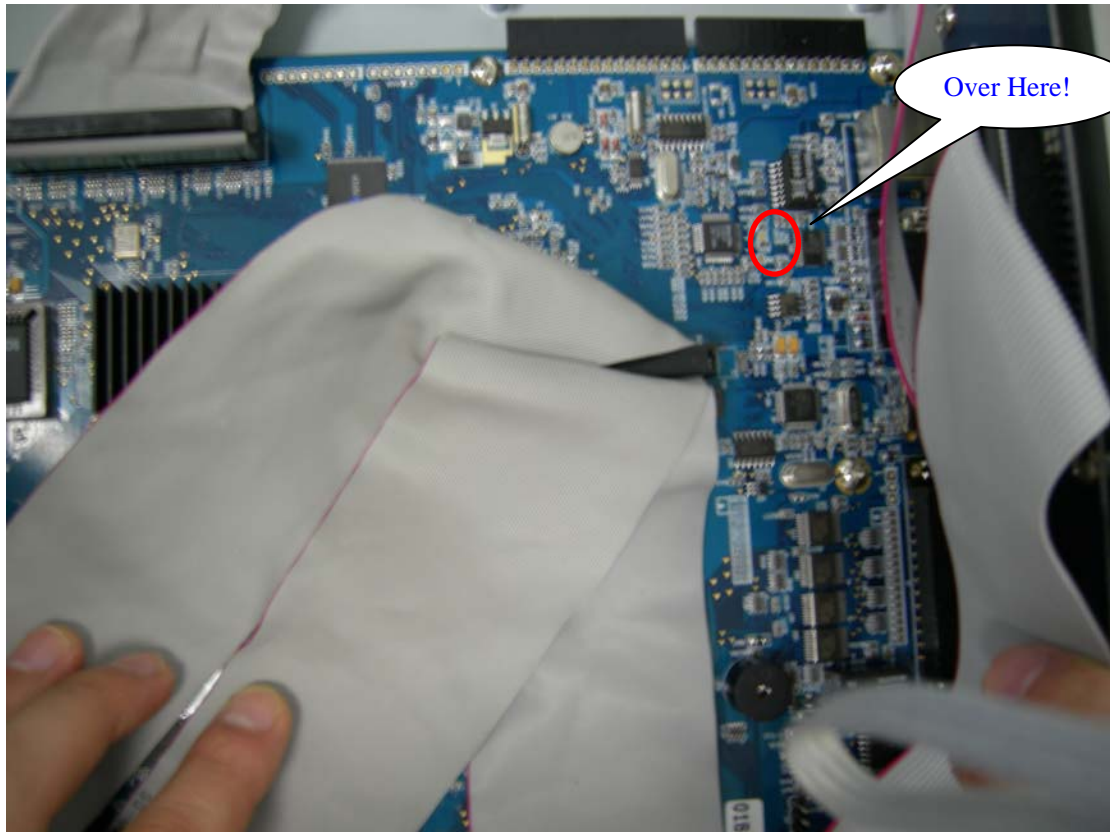
1. Turn off the power and dismount the cover from the unit.



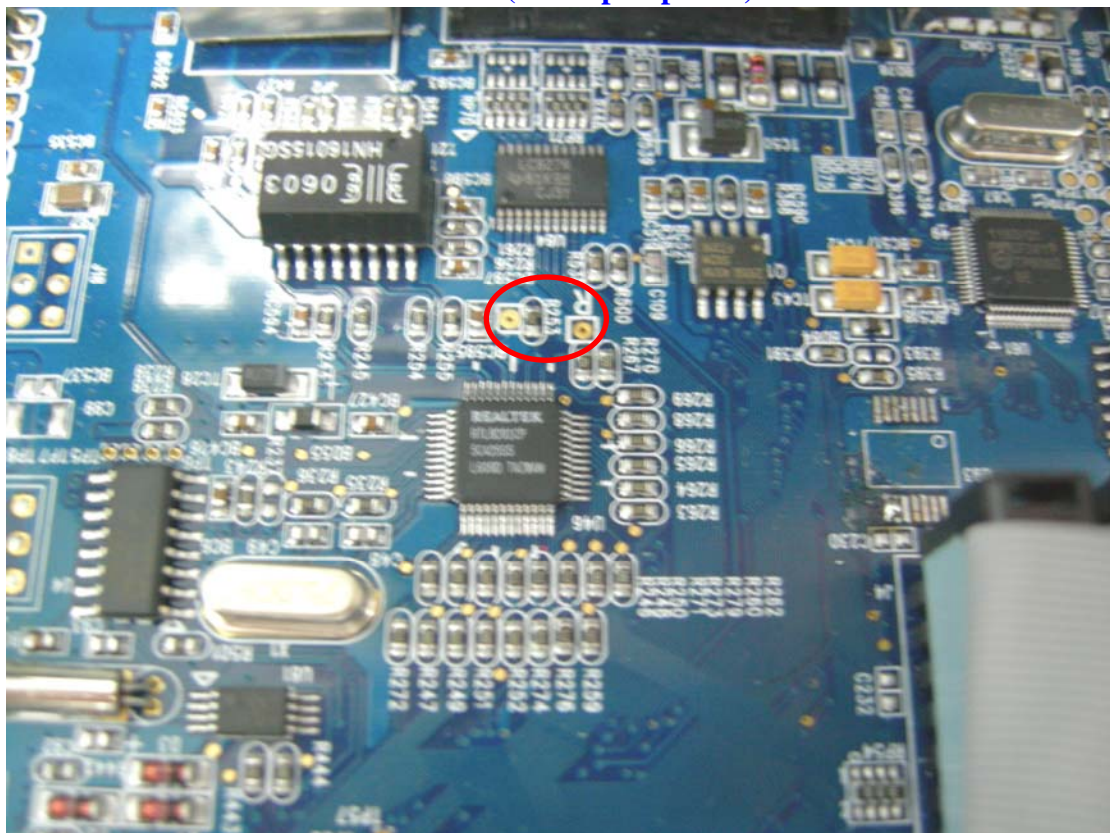
2. Remove the bracket of HDD.



**3. Find the Reset Point.**



**4. Take a closer look at Reset Point (The 2 pad points).**



5. Connect the two points to form a short circuit. Then plug in the power and hold the short circuit for more than 10 seconds.

