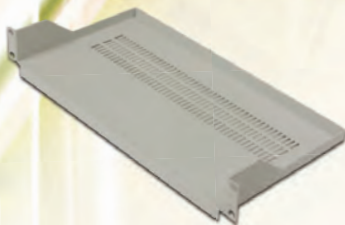
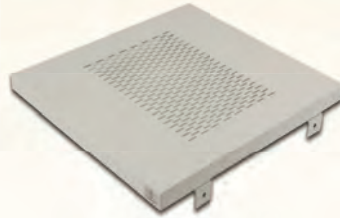


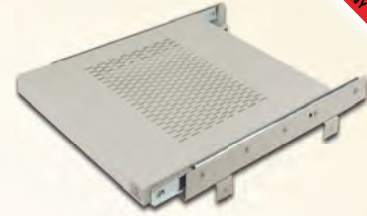
# COMPONENT SHELVES



A



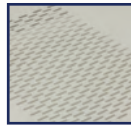
B



C



Load Test



Ventilation



19" GERMANY Sliding

\*Safety Factor 100% More

## Feature

- ◆ **19" GERMANY EXPORT RACK SHELVES** were designed to easy mounted on all standard 19" rack system with ventilation slots.
- ◆ **Manufactured** to the standard of ANSI/EIA-310D-1992 (Rev.EIA-310C), IEC60297-1, IEC60297-2, BS5954 Part2, DIN41494
- ◆ **Product** from Electro-Galvanize Sheet Steel with thickness of 1.5 mm. Max. load capacity and Optional type and deep size.
  - 1 U Front Screw Shelf for Open Rack and Wall Rack 50 kgs.\* **A**
  - Fixed Shelf 100 kgs.\* **B**
  - Sliding Shelf 75 kgs.\* **C**
- ◆ **Electrostatic** Powder Coating paint, New Shine. light gray color.
- ◆ **Manufacturing and Distribution** by ISO 9001:2008 Company.

| Description           | Deep     |          |          |          |          | Figure   |
|-----------------------|----------|----------|----------|----------|----------|----------|
|                       | 250 mm.  | 480 mm.  | 650 mm.  | 750 mm.  | 950 mm.  |          |
| FRONT PANEL FIX SHELF | G7-01025 | -        | -        | -        | -        | <b>A</b> |
| FIX COMPONENT SHELF   | -        | G7-02045 | G7-02065 | G7-02075 | G7-02095 | <b>B</b> |
| SLIDE COMPONENT SHELF | -        | G7-03045 | G7-03065 | G7-03075 | G7-03095 | <b>C</b> |

\* Order No. for Black Color : G7-0XXXXB

Sample : G7-02065**B** Fix Component Shelf Deep 65 cm., Black Color